

2020-2021

District Parent and Family Engagement Policy

Engage • Educate • Empower

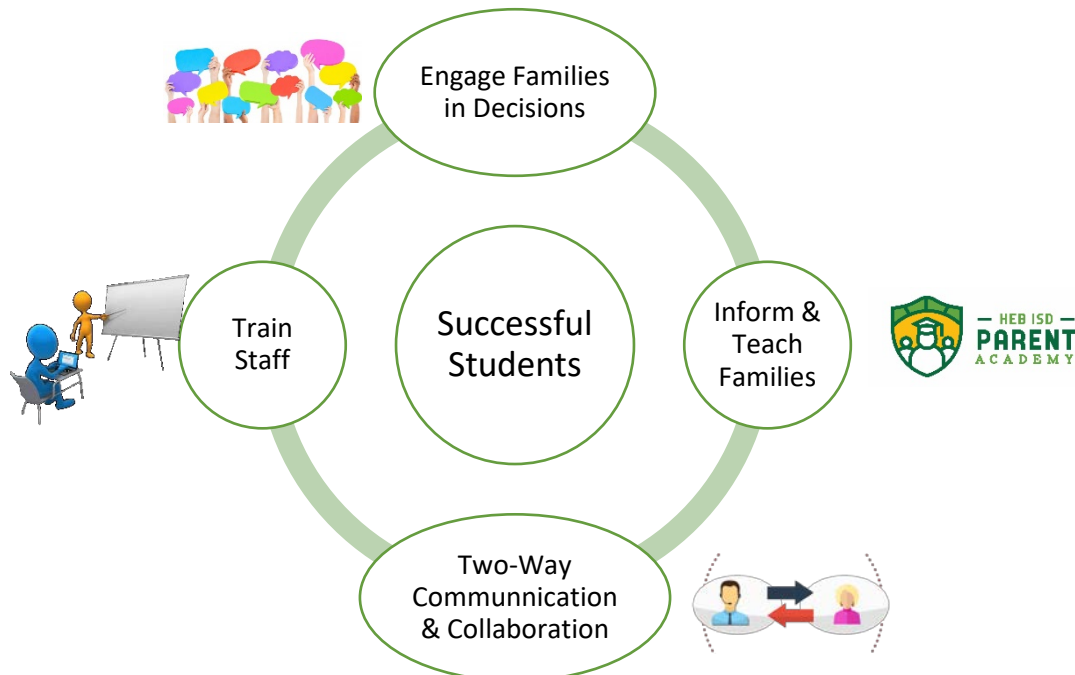


Families of HEB ISD

What We Do



How We Do It
 (In-Person and Virtually)



Engage • Educate • Empower



Families of HEB ISD

What It Looks Like

Engage Families in Decision-Making Process

- **District Level Improvement Committee**
 - Use data to form, revise, and evaluate District Strategic Plan
- **Annual District Survey**
 - Barriers to greater participation by families
- **District Parent Advisory Committee**
 - Annual Consultation/Title funds
 - Collect parent feedback on programming, policy, and funding

Effective Two-Way Communication and Collaboration

- Send program information in time for families to make plans.
- User friendly format
- Translate when possible
- Multiple time options, in-person or online
- Work together with campuses and other departments

Inform and Teach Families

- Connect families with community resources
- Parent Academy: Curriculum, Assessment, Progress Monitoring, Helping Student at Home, ESL, Technology, etc...
- Partner with campuses
- Provide resources
- Keep required records
- Math and Literacy events

Build Faculty and Staff Capacity

- Building relationships
- Why we need to engage families
- Help campuses plan and implement effective family engagement opportunities to support students
- Keep required records
- Help Family Engagement/Title 1 Crate Facilitators document all family engagement efforts